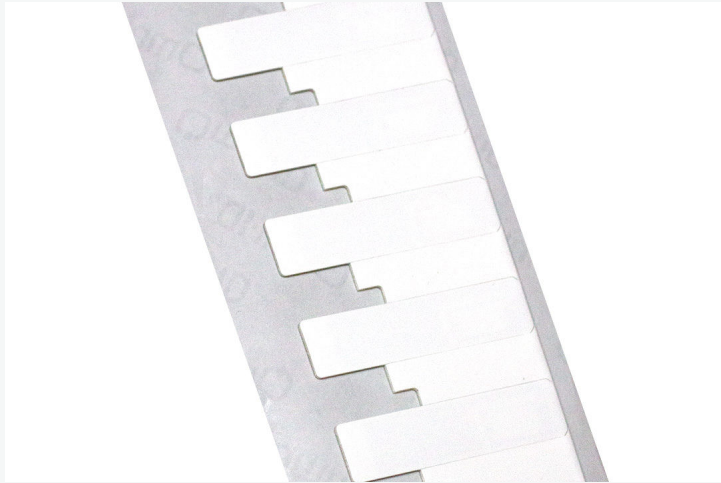


# [ Products ] you can identify with



## IQ 350

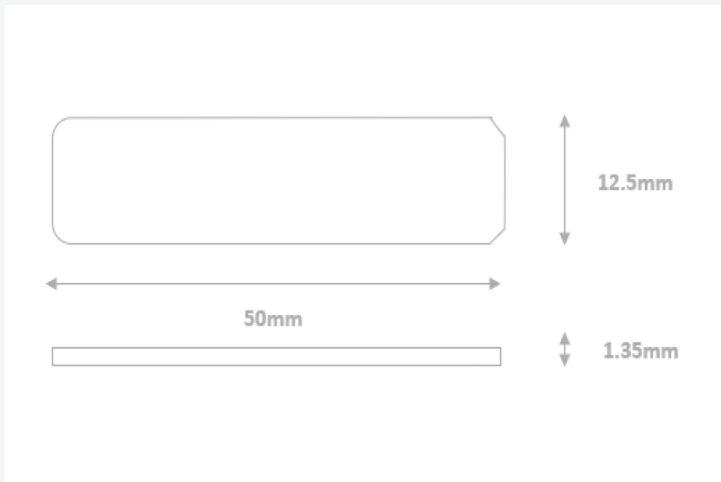
Omni-ID's IQ 350 labels provide on metal tag functionality, within a small, low profile, easy to deploy label. With the smallest size to performance ratio in the market, the IQ 350 also boasts a wide read performance making this an ideal choice for portal applications. Optimized for thermal barcode printers, the IQ 350 enables low cost, hassle-free RFID deployment.

### Applications

With a thin profile and label presentation, Omni-ID's IQ 350 labels are ideal for on-metal applications such as:

- IT, office, hospital and laboratory asset tracking
- Logistics involving metallic packaging
- Intermodal logistics

### Dimensions



Measurements shown in mm

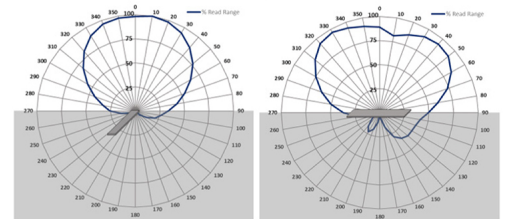
### Physical Specifications

<b>Material</b>	Synthetic Label
<b>Size</b>	50.0 x 12.5 x 1.35 mm 1.97 x 0.49 x 0.05 in
<b>Weight (g)</b>	0.50
<b>Attachment</b>	Self-adhesive suitable for curved surfaces to a minimum radius of 58mm

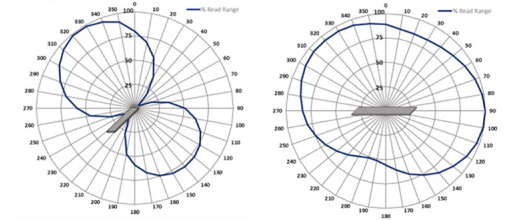
Product dimensions shown above are the maximum. Batch to batch variation could be within 5%. Unspliced sections will be within 0.2mm tolerance.

### Radiation Patterns

#### On Metal



#### Off Metal



# [ Products ] you can identify with

## Environmental Specifications

<b>Operating Temperature</b>	-40°C to +85°C
<b>Max Temperature Exposure</b>	-40°C to +85°C
<b>Application Temperature</b>	+18°C to +35°C
<b>IP Rating</b>	IP68
<b>Printer Compatibility</b>	SATO, Zebra

## Certifications

CE, RoHS



## Operational Specifications

<b>Radio Protocol</b>	EPC Class 1 Gen2v2
<b>Frequency Range</b>	866 – 868 MHz (EU) 902 – 928 MHz (US)
<b>Read Range – Fixed Reader</b>	Up to 3.5m (11.4 feet)
<b>Read Range – Handheld Reader</b>	Up to 2m (6.5 feet)
<b>On Metal or Balanced</b>	Optimized for metal
<b>Material Compatibility</b>	Metal
<b>IC Type (Chip)</b>	Monza R6-P
<b>Memory</b>	EPC - 128 bits User - 32 bits Unique TID - 48 bits

Quoted performance achieved using standard testing methodology on Aluminium test plates. Read range is dependent on multiple factors such as; RFID reader transmit power and receiver sensitivity, asset material and environment. Please see the Omni-ID On Metal Labels User Guide for more detail.  
2 EPC and User memory are reprogrammable. UTID is locked at point of manufacture by IC manufacturer.

## Ordering Information

<b>Warranty</b>	1 year								
<b>Product Options</b>	:303 Customization - 4 color static print :315 Overlamination :536 Textured surface adhesive :701 (Standard Service Bureau)								
<b>Part Number / Order Codes / Order Numbers</b>	158 - (US, EU)								
<b>Supply Format</b>	900 labels per roll								
<b>Minimum Order Quantity</b>	<table border="1"> <tr> <td>Overlamination</td> <td>10,800 labels (12 rolls)</td> </tr> <tr> <td>Customization</td> <td>10,800 labels (12 rolls)</td> </tr> <tr> <td>Service Bureau</td> <td>900 labels (1 roll)</td> </tr> <tr> <td>Standard label</td> <td>900 labels (1 roll)</td> </tr> </table>	Overlamination	10,800 labels (12 rolls)	Customization	10,800 labels (12 rolls)	Service Bureau	900 labels (1 roll)	Standard label	900 labels (1 roll)
Overlamination	10,800 labels (12 rolls)								
Customization	10,800 labels (12 rolls)								
Service Bureau	900 labels (1 roll)								
Standard label	900 labels (1 roll)								

For product or technology inquiries email: [sales@omni-id.com](mailto:sales@omni-id.com).  
Visit [omni-id.com](http://omni-id.com) to learn more about the complete line of **Omni-ID RFID** products